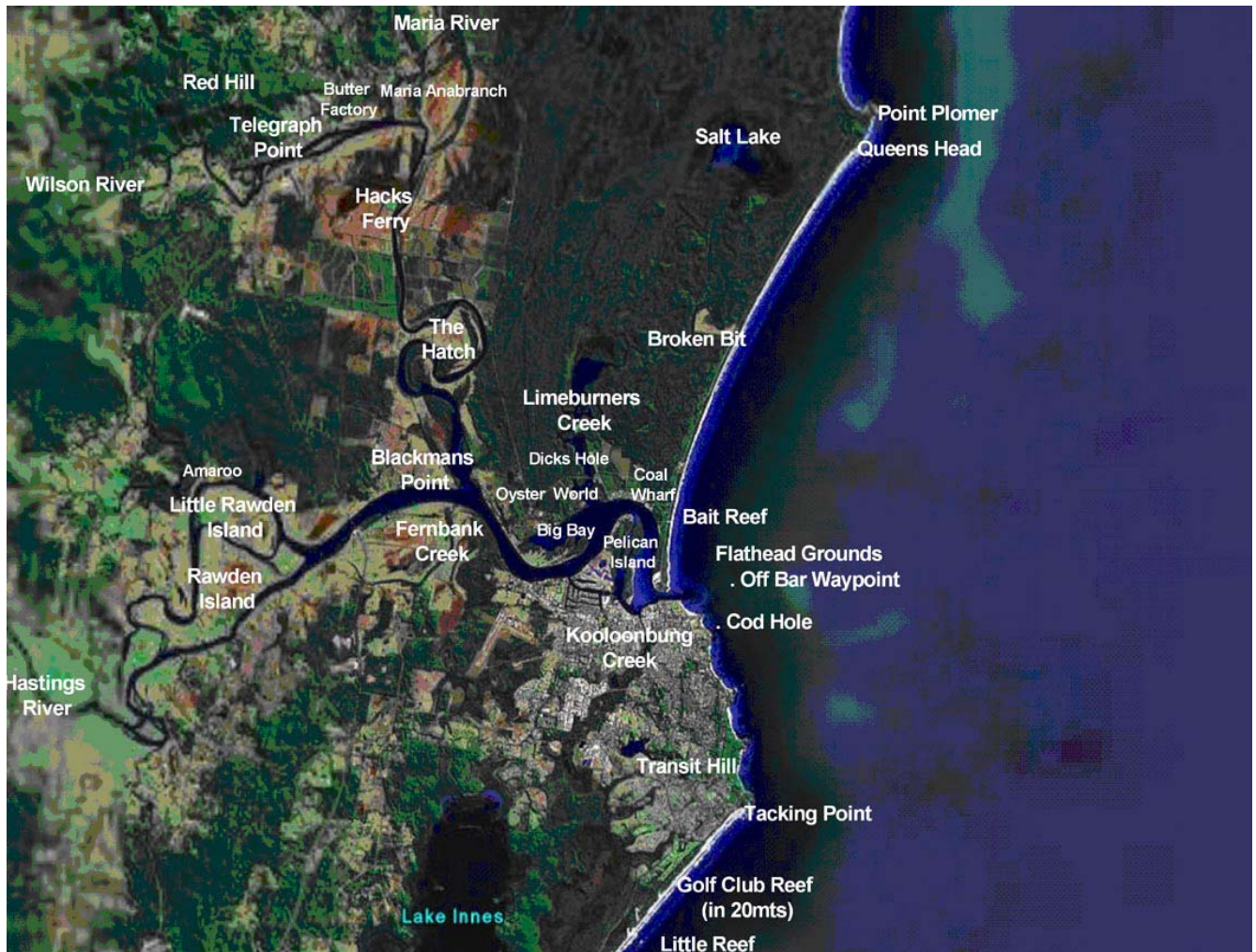


## CC EX 10 – COASTAL ORIENTATION:

**Purpose:** To familiarise crews with the operational area, its navigational hazards, place names and the information available on chart Aus 811.

This exercise complements the SAR EX 1 that is limited to the Hastings River. Trainers should make a close inshore reconnaissance of notable features, mountains, headlands, bombies and navigational marks while the trainee crew observes the soundings/radar and reconciles their observations with those charted and uncharted.

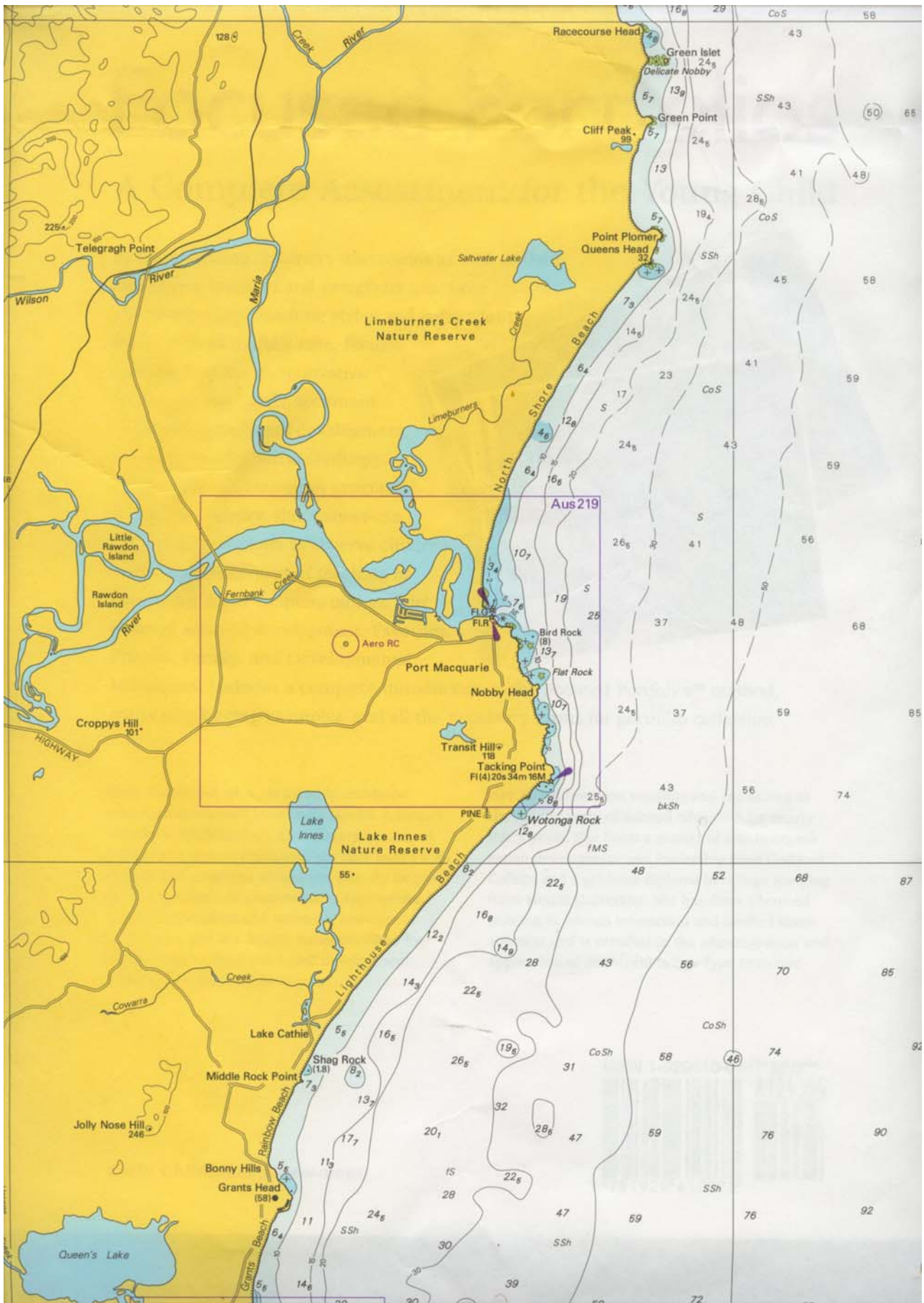


*Courtesy of Google Earth*

Trainees should familiarise themselves with the presentation “Coastal Orientation” and its aerial movie clips & offshore photo images of our operational area.

### Training resources:

Chart- “Aus 811”  
Presentation - Coastal Orientation



*Training purposes only-Not for Navigation-Courtesy of AHO*