

## CC EX 13 – USE OF WHEELHOUSE EQUIPMENT:

- Prerequisites:**
1. The trainee is competent at radio protocols CC Ex 9.
  2. The trainee is competent at basic chartwork SARCC Nav Ex Into-Ex 2.

**Purpose:** To turn on, tune & operate the vessel’s navigational aids under direction.

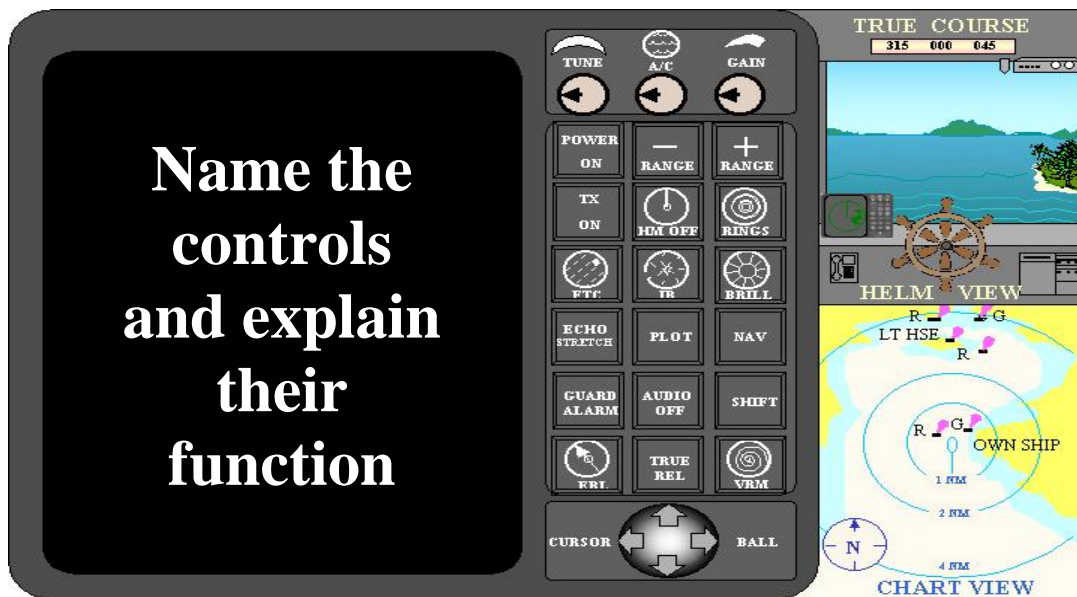
### THE TRAINEE DESCRIBES THE CONTROLS & WARNING SYSTEMS OF CR1.



### THE TRAINEE IS TO PERFORM THE GPS/SONAR TASKS

SET UP TASK	ACTIVITY TASK
Turn on & set backlight level.	The trainee calls out soundings in the river, on the bar and approaching a shoal coastline.
Select Nav, Sonar, Steer, Map & window as required.	
Interpret & communicate displayed soundings.	
Describe displayed info. of Nav and Steer screen.	The trainee selects Wpts 2., 3.& 4., and provides nav. advice to reach destination.
Select a saved waypoint & initiate go to waypoint.	
Communicate advice of displayed steer screen.	
Cancel selected navigation route.	The trainee inputs: 31° 25'.400 S    152° 56'.340 E 31° 26'.750 S    152° 56'.150 E 31° 25'.430 S    152° 57'.010 E and provides nav. advice to reach destination.
Enter a quick save, MOB, & delete.	
Enter a lat/long & initiate a go to waypoint route.	
Describe errors & precautions of using GPS navigation.	

**THE TRAINEE DESCRIBES THE CONTROLS OF CR1 RADAR.**



**THE TRAINEE IS TO PERFORM THE RADAR TASKS**

Describe personal safety precautions.	Warning or signage before transmitting.
Turn on & tune in.	A-Z method- Brilliance, gain, heading marker, range scanning, tuning.
Describe proper use of A/C Sea Clutter & FTC Rain.	Progressive with A/C, over entire PPI with FTC.
Access Range Rings, IR, Echo stretch, Shift, VRM, EBL.	Real.
Identify coastal feature and advise of its range / bearing.	Real or simulated.
Plot position and describe its reliability.	Real or simulated.
Identify vessel targets and their range / bearing.	Real or simulated.
Determine risk of collision by EBL & range.	Real or simulated.
Conduct flotilla of vessels search pattern by range ring or VRM vessel separation.	Practical activity.

**Training resources:**

- Workbooks- "Radar".
- Presentation- CD Index>CR1 Lessons> Radar >"Radar trainer"
- Starpath Simulator