

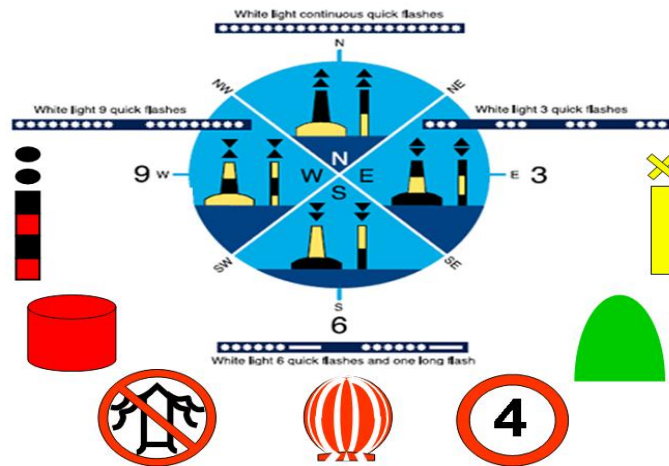
## RIB EX 4 - RIB SKIPPER- NAVIGATING THE RIVER SAFELY:

**Tasks & purpose:** To navigate the river safely at day and night with regard to the buoyage and regulations, depth & tidal range and the presence of other river users.

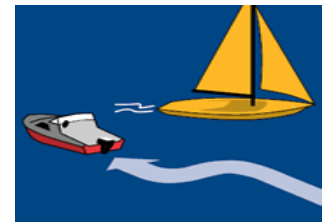
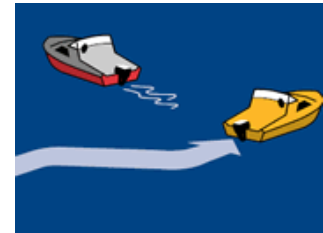
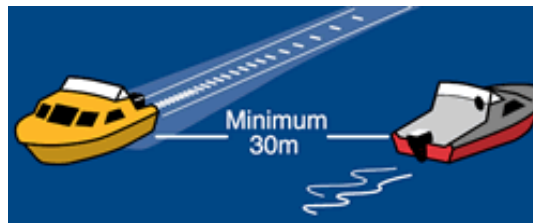
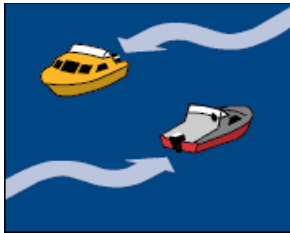
### TASK 1. STUDY BUOYAGE IN THE NSW MARITIME BOATING SAFETY HANDBOOK

The Buoyage should be studied in the NSW Maritime Safe Boating Handbook or Gandy's Aus. B. M.

The Rules should be studied in Gandy's Aus. Boating Manual. Local rules are described in the NSW Maritime Safe Boating Handbook.



### TASK 2. STUDY GIVE WAY RULES IN THE BOATING SAFETY HANDBOOK



All illustrations above courtesy of NSW Maritime Authority

### TASK 3. SIMULATOR EXERCISE BUOYAGE 1

Now negotiate the Buoyage One Exercise on the Motorboat simulator using the Port Fantasy Scenery at day & at night. Take note of the depth soundings in the channels you explore.



## TASK 4. STUDY THE TIDE CHART

Study the tides chart for today. Note the symbol for Neaps, the Time lags and the Range of Tide.

In the example there is 1.60mtr over the chart datum at high water and 0.38mtr over the chart datum at low water. The range of tide is:

$$\begin{aligned}
 & 1.60 \\
 & - \underline{0.38} \\
 & = 1.22\text{mtr}
 \end{aligned}$$

	☉	1954	0.69
1	21	0223	1.63
3		0915	0.40
9	SU	1529	1.37
5		2110	0.65
5	22	0330	1.60
3		1006	0.38
3	MO	1625	1.49
5		2222	0.58



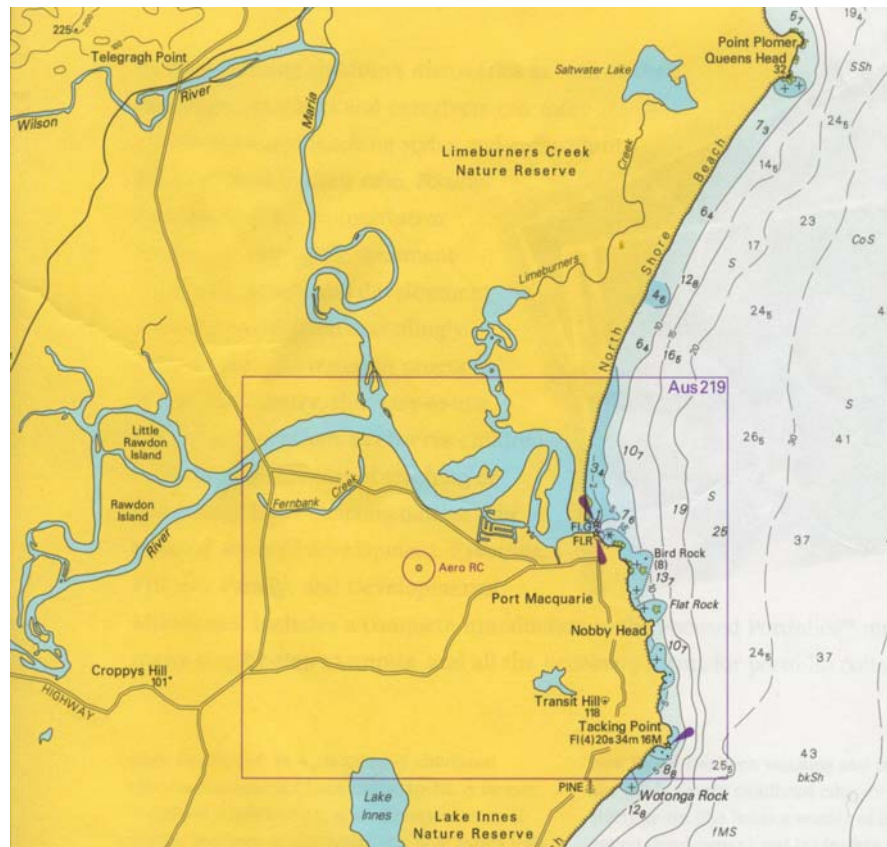
## TASK 4. USING THE ECHO SOUNDER AND CALCULATING CHART DATUMS

Navigate the river safely to determine the depth of the water around each of the main channel marks.

Using today's time and tide, predict (using the method above) what the depth of water at each spot will be at HW & LW.

Following the red lines on this chart, survey the soundings from bank to bank to discover the available (safe) low water manoeuvring zone for the RIB. Training chartlets are available from your trainer to map your survey.

Next, Arrange with your trainer to drive up the river at night.



Not for Navigation – Chartlet courtesy of AHO

### Training resources:

- Workbooks- “NSW Safe Boating Handbook” & “Gandy’s Australian Boating Man”.
- Presentation - CD Index> Training utilities> “Rules Interactive courtesy of RNLI”
- Presentation - CD Index>Rib Lessons> Apply domestic regs. op. sm. vess. > “Pilotage game”
- USCG Powerboat Instruction - Rules of the Road Interactive JAVA Program
- Motorboat Simulator- Port fantasy > Buoy Ex 1.