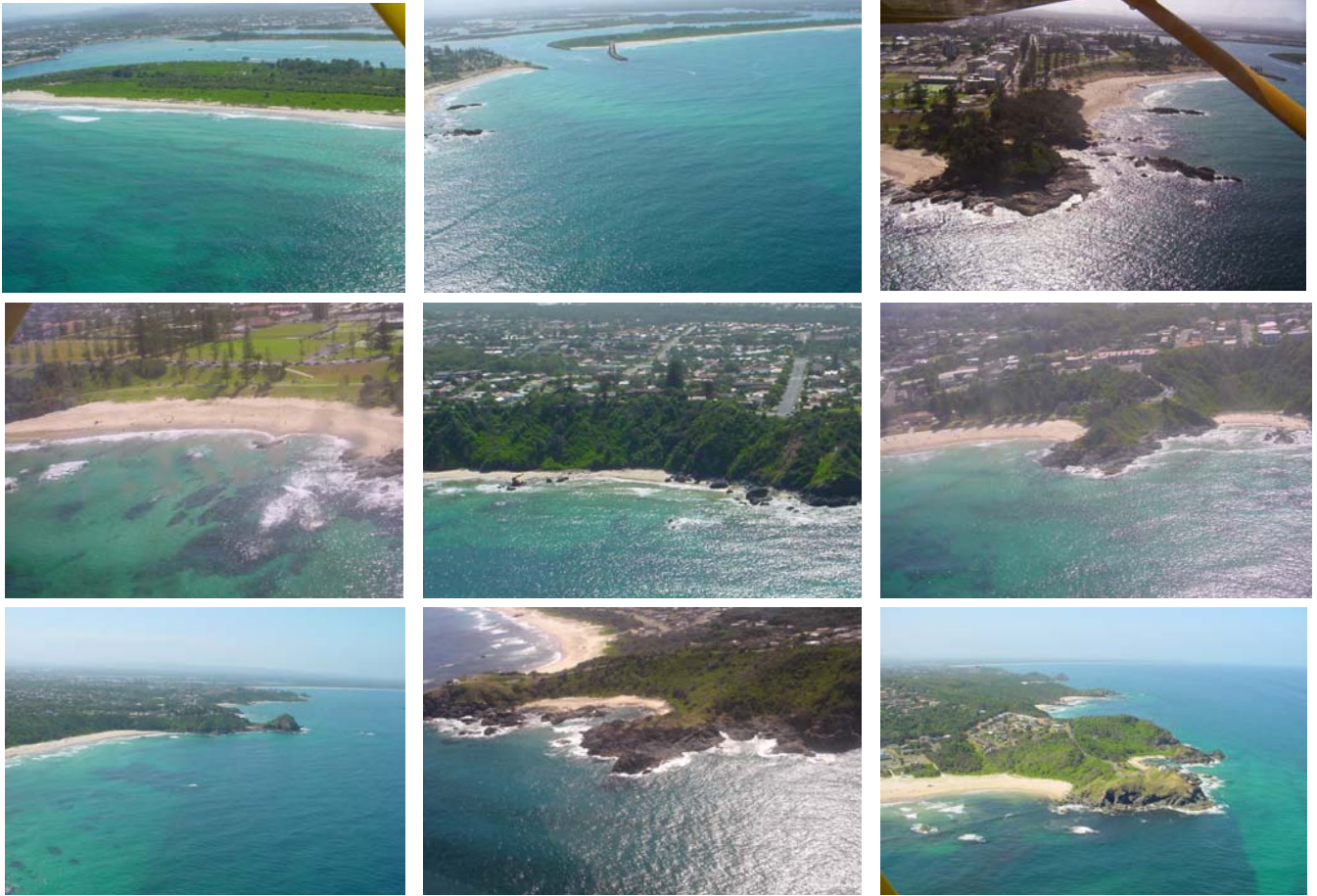


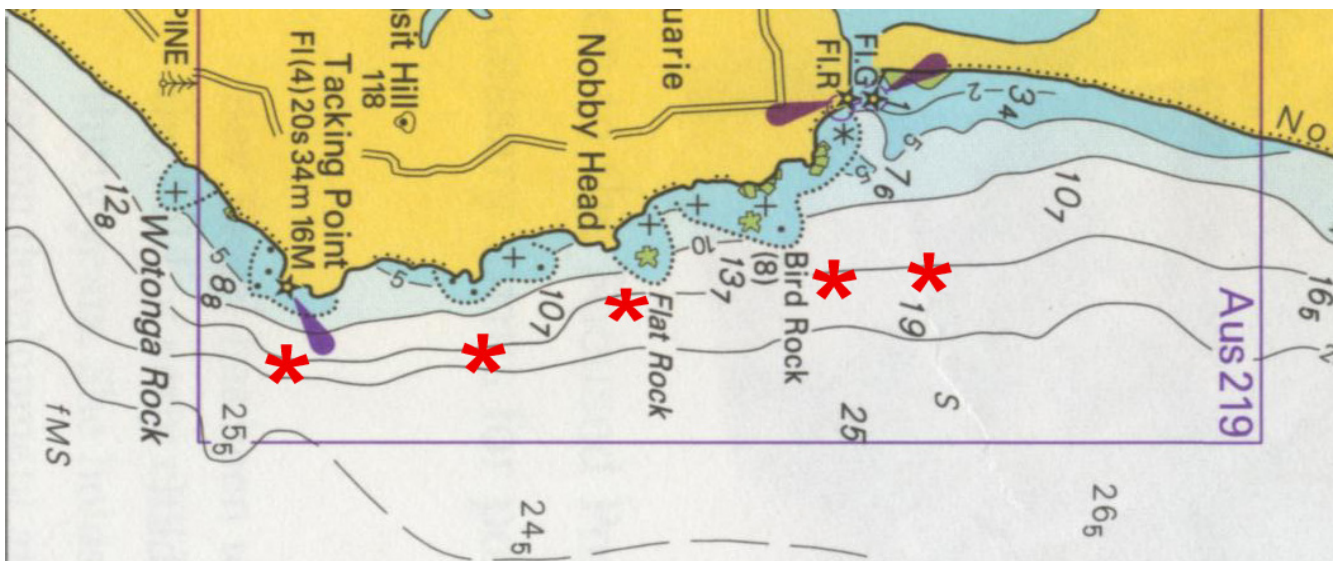
## RIB EX 12 - RIB SKIPPER- NIGHT NAVIGATION:

**Tasks & purpose:** To navigate safely with regard to coastal hazards & regulations.

### TASK 1. DESCRIBE TO YOUR TRAINER THE HAZARDS AND OBSTRUCTIONS PRESENTED IN THE SEQUENCE OF THE PORT MAC COASTLINE SHOWN BELOW



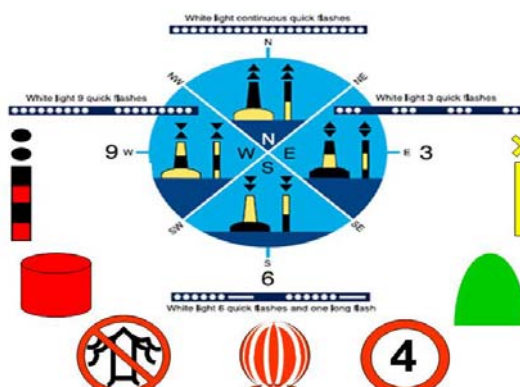
### TASK 2. NAVIGATE TO THE POSITIONS SHOWN BELOW USING LIGHTS & SOUNDER



Chartlet courtesy of AHO

**TASK 3. MATCH THE LIGHTING SEQUENCE WITH THE BUOYS SHOWN BELOW**

- Red Flashing
- Green Flashing
- Yellow Flashing
- White Flashing (1 long)
- White Flashing (Continuous)
- White Flashing (Group 2)
- White Flashing (Group 3)
- White Flashing (Group 6+1 long)
- White Flashing (Group 9)
- White Isophase



**TASK 4. IDENTIFY THE VESSELS** All illustrations above courtesy of NSW Maritime Authority

AHEAD	AHEAD	LARGE SHIP AHEAD	AHEAD
TRAWL	CROSSING	LARGE SHIP CROSSING	CROSSING
NET/LINE	CROSSING	ASTERN or ANCHORED	CROSSING

**Training resources:**

- Workbooks- "NSW Safe Boating Handbook" & "Gandy's Australian Boating Man".
- Presentation - CD Index> Training utilities> "Rules Interactive courtesy of RNLI"
- Presentation - CD Index> Rib Lessons> Apply domestic regs. op. sm. vess. > "Pilotage game"
- USCG Powerboat Instruction - Rules of the Road Interactive JAVA Program
- Motorboat Simulator- Port fantasy > Buoy Ex 1.