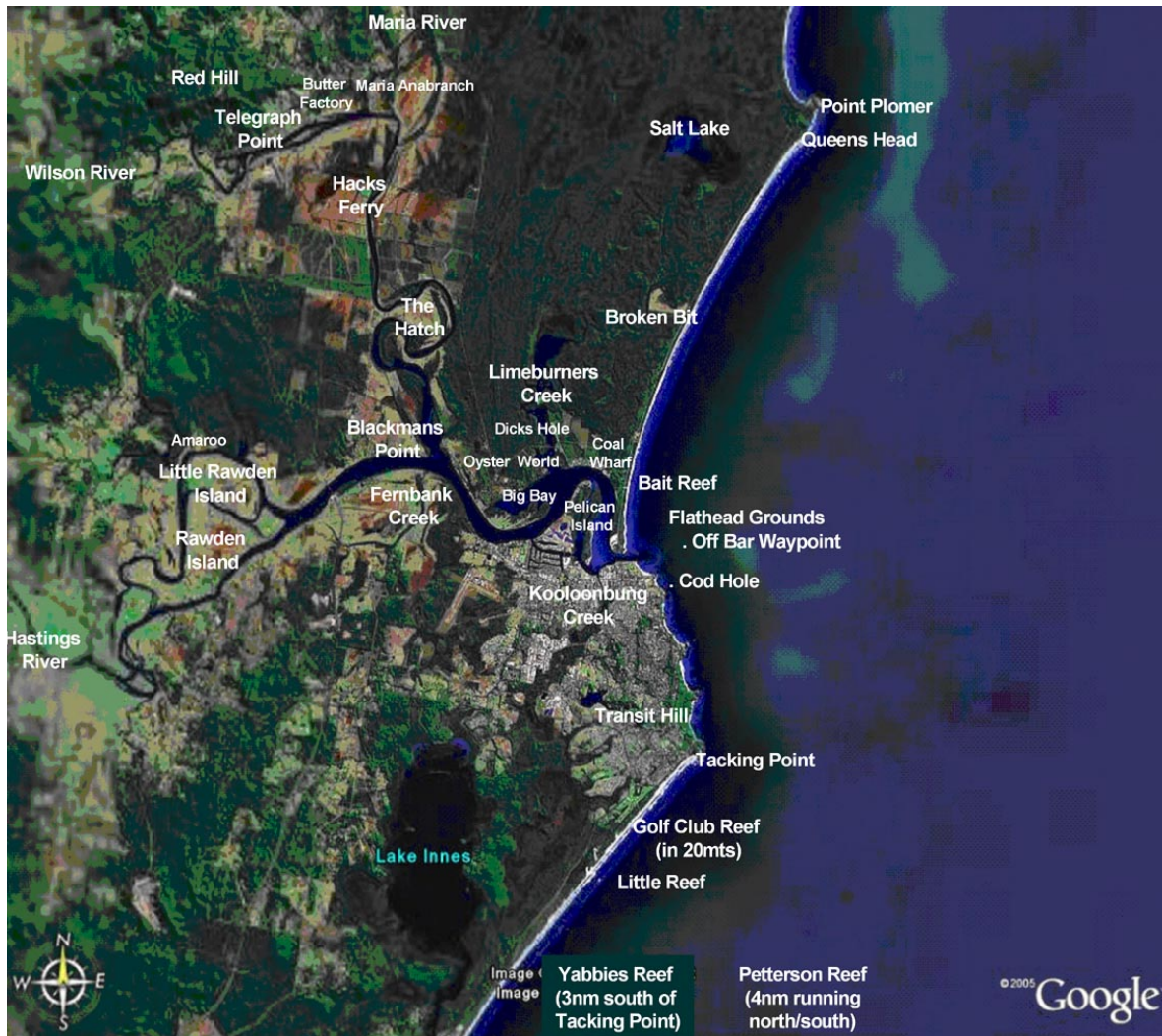


## PORT SARCC NAV EX INTRO - CHART OF PMSRG OPERATIONAL AREA:

**Purpose:** To familiarise radio operators with the operational area, its navigational hazards, common place names and the information available on chart Aus 811.

This exercise complements the SAR EX 1 that is limited to the Hastings River and is a preparatory to further chartwork. Trainers should point out the notable features, mountains, headlands, and navigational marks that are visible from seaward while the trainees should study the specifications detailed in the Chart Title.

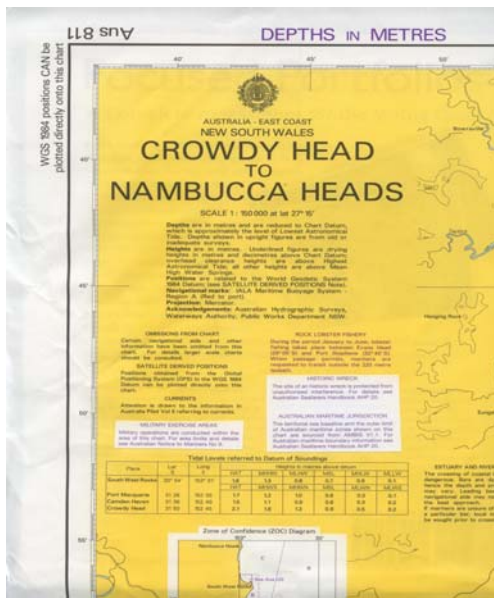


*Courtesy of Google Earth*

Trainees should familiarise themselves with the presentation “Coastal Orientation” and its aerial movie clips & offshore photo images of our operational area.

### Training resources:

Chart- “Aus 811”  
Presentation - “Coastal Orientation”



*Training purposes only-Not for Navigation-Courtesy of AHO*

Trainees should familiarise themselves with the specifications of the Chart Aus 811 Title and determine the position, sounding & distance to the commonly named fishing spots.

**Training resources:**

Chart- “Aus 811”

Workbook- “Coastal Navigation”.

Presentation - CD Index>Rad. Op. Lessons> Elementary navigation > “Basic chartwork”

Motorboat Sim.- Situation - Port easterly 17 Kts & Port Coastal easterly Kts