

## **PORT SAR EX 10b – OFFSHORE COORDINATED SAR UPDATED TASK INFORMATION**

**1340 Action - Requests to NSW Maritime/RCC/Fishing clubs or other relevant sources for improved vessel description.**

**1345 Response-** RCC gives MAREC report based on AUSREP (Small Ships 2003).  
Message from RCC to OSC reads:

- **Voice:**  
MAREC 7/03, RCC AUSTRALIA  
ALFA, MOTORBOAT PART CABIN, GALANT, VICTOR KILO ONE EIGHT ZERO,  
PLEASURE  
BRAVO, MAKE TRAWLER TWO FIVE  
CHARLIE, INBOARD MOTOR, 20 HORSE POWER.  
DELTA, CARVEL, TIMBER, GREY  
ECHO, STRAIGHT STEM, CANOE STERN  
FOXTROOT, ROUND BOTTOM  
GOLF, NINE AND A HALF METRES  
HOTEL, AFT WHEELHOUSE.  
INDIA, TWO

**1348 Action -All ships “securite” is broadcast with “Galant’s” description.**

**1348 Response-** Trawler sighted at **31° 24′.2 S 152° 54′.2 E**

**1350 Action -Reply to request to NSW Police for additional resources.**

**1350 – Response-** None available until 18:00. Permission to exceed accreditation limits not granted for Duck but granted for Rib.

Therefore-Assets available for river search- Duckie

Therefore-Assets available for sea search-CR1, RIB, a charter fishing boat without radar.

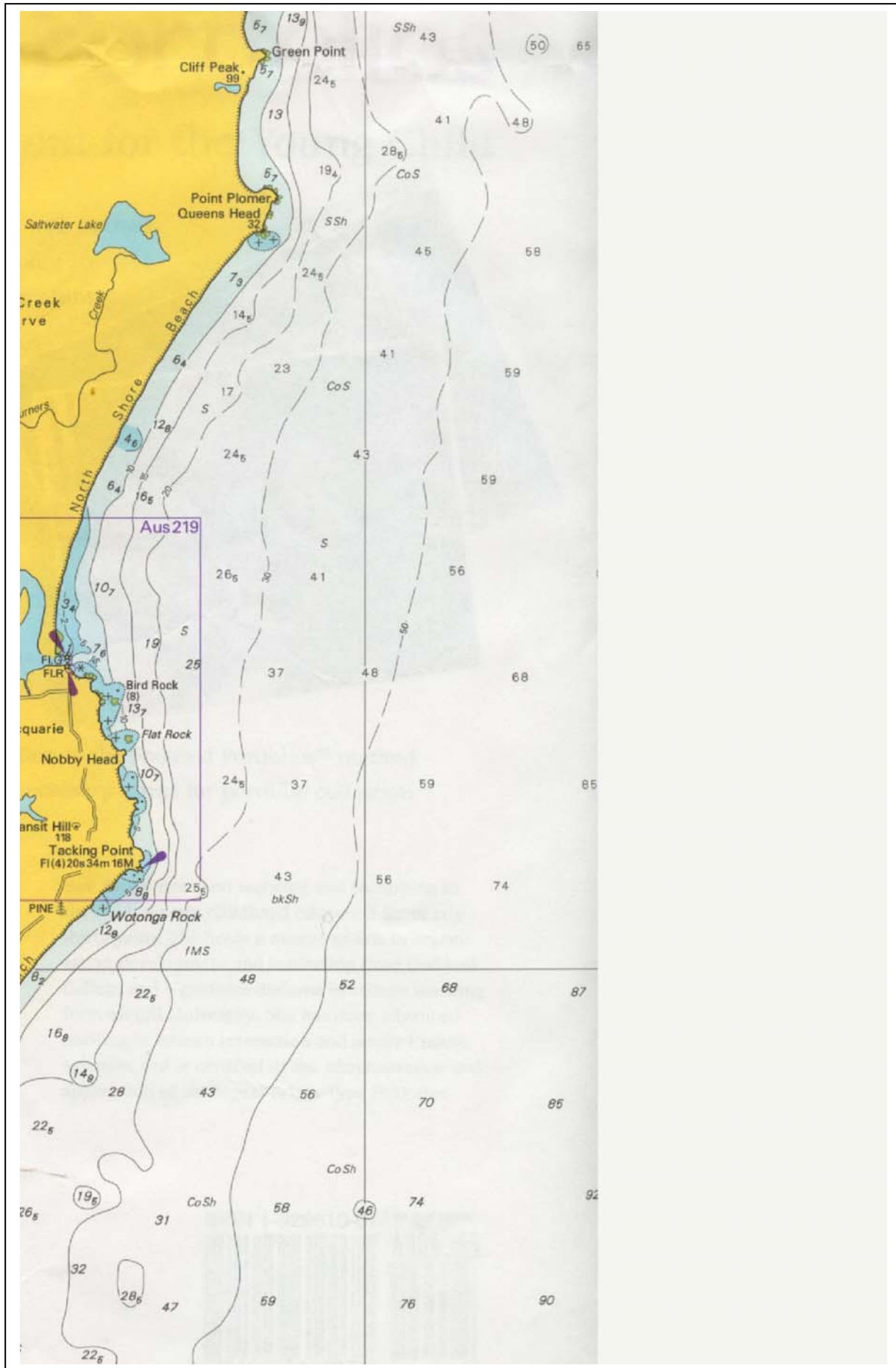
**1352 Action –Search of river by duck**

**1400 - Response –** Duck confirms the vessel in **31° 24′.2 S 152° 54′.2 E** is not the vessel.

**1410- Action –Repeated all ships “Securite” is broadcast with “Galant’s” description.**

**1415 - Replies to all ships “Securite” to lookout for missing vessel.**

- Confirmed sighted time of departure of a look alike trawler from river entrance 11:30
- Advice from charter fishing vessel - current is running south at 1.5 knots.
- Advice from coastal tanker anchored 3NM east of PM. At 12:30, as they were approaching their present position to anchor, they passed abeam to port (about half a mile) a vessel matching the MAREC description. It appeared deserted and would not answer their signals.
- Further advice from coastal tanker. They anchored at **13:00** in position **31° 24′.86 S 152° 58′.15 E**. Approach course **190°T**, approach speed **10 Kts**.



Chartlet courtesy of AHO- For training purposes only-Not for navigation