

CHECK YOUR PROGRESS SEAWORTHINESS

NAME:
(answers)

Question 1.

In relation to vessel construction materials, match each material to the correct response below.

- | | |
|------------------------------------|--------------------------------|
| 1. Copper Nickel alloy | a. Does not corrode. |
| 2. Glass Reinforced Plastic (GRP). | b. Low weight & high strength. |
| 3. Steel. | c. Has good fire resistance |
| 4. Timber | d. Is brittle. |

Question 2.

Match each definition to the correct item below.

- | | |
|------------------|---|
| 1. Camber. | a. A narrow empty space between two bulkheads to prevent leakage between adjacent compartments. |
| 2. Chain locker. | b. A sharp change in the transverse shape of a vessel's hull plating. |
| 3. Chine. | c. A compartment in the forward lower portion of a ship, in which the anchor chain is stored. |
| 4. Cofferdam. | d. The transverse curvature of a deck. |

Question 4.

A stiff ship is caused by:

- the centre of gravity being too low.
- the centre of gravity being too high.
- the centre of buoyancy being too low.
- the centre of buoyancy being too high.

Question 5.

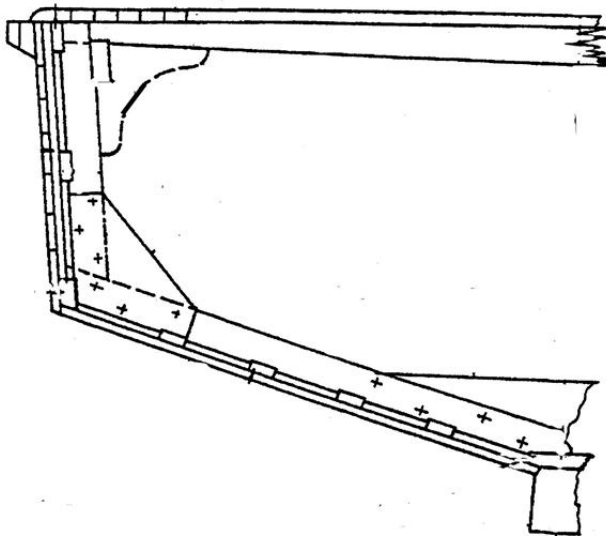
Explain briefly hogging and sagging.

Hogging is:

Sagging is:

Question 6.

Label the Deck Planking and a stringer



Question 7.

In relation to vessel construction materials, match each material to the correct response below.

- | | |
|------------------------------------|-------------------------------|
| 1. Ferro Cement. | a. Is strong. |
| 2. Aluminium. | b. Is cheap. |
| 3. Glass Reinforced Plastic (GRP). | c. Suffers minimal corrosion. |
| 4. Steel. | d. Suffers UV damage |

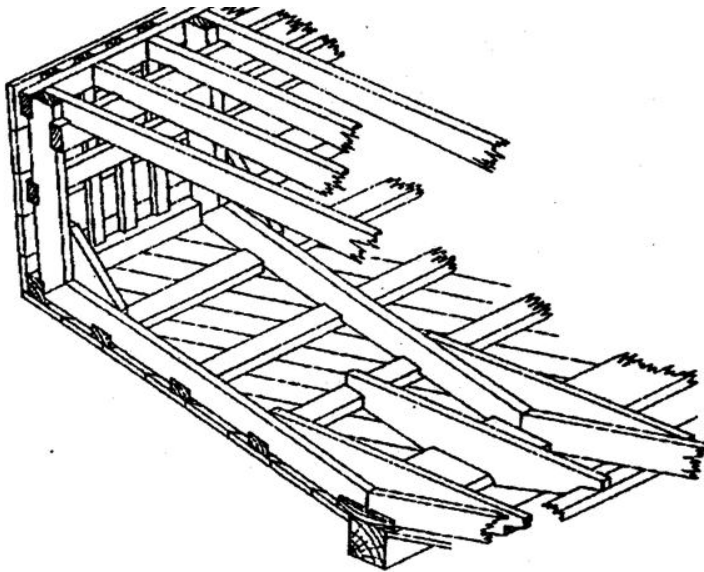
Question 8.

Match each definition to the correct item below.

- | | |
|-------------------|---|
| 1. Sheer. | a. The rise of the bottom plating above the base line measured at the line of moulded beam. |
| 2. Rake. | b. The inward curvature of the hull above the summer waterline. |
| 3. Rise of Floor. | c. The fore-and-aft curvature of a deck. |
| 4. Tumblehome. | d. The amount by which a mast, funnel or stern slopes from the vertical line. |

Question 9.

In the diagram below, label the transverse structural members.



Question 10.

Match each definition to the correct item below.

- | | |
|--------------|--|
| 1. Gunwale. | a. Fore and aft structural members tying frames together. |
| 2. Rake. | b. An above deck extension at the side of vessels to prevent loss of persons or equipment overboard. |
| 3. Bulwark. | c. A protective board fitted to the sheer plank. |
| 4. Stringer. | d. The amount by which a structural member slopes from the vertical. |

Question 11.

Match each definition to the correct item below.

- | | |
|------------------------|--|
| 1. Athwartships. | a. A weight or weights used to increase the draft or lower the ship's centre of gravity. |
| 2. Ballast. | b. A watertight bulkhead within 7½% of the length of a vessel from forward. |
| 3. Collision Bulkhead. | c. At right angles to the fore and aft line. |
| 4. Deck Beam. | d. A beam running athwartships supporting the deck. |

Question 12.

Match each definition to the correct item below.

- | | |
|------------------------------|--|
| 1. Sponson. | a. Fender fitted to hull to prevent chafing and damage. |
| 2. Scupper. | b. Raised edge around an opening to help prevent water entry. |
| 3. Coaming. | c. Drain from weather decks to carry off water. |
| 4. Intercostal longitudinal. | d. A structural member fitted in short lengths between frames. |

Question 13.

A tender ship is caused by:

- a. the centre of gravity being too high.
- b. the centre of buoyancy being too high.
- c. the centre of buoyancy being too low.
- d. the centre of gravity being too low.

Question 14.

Draw the profile plan of a timber vessel's longitudinal structures below.

Question 15.

Describe your precautions in order to slip for an annual out of water survey.

Question 16.

In relation to vessel construction materials, match each material to the correct response below.

- | | |
|------------------|-----------------------------------|
| 1. Rubber. | a. Rots. |
| 2. Aluminium. | b. Needs care in antifoul choice. |
| 3. Timber. | c. Is heavy. |
| 4. Ferro Cement. | d. Is easily damaged. |

Question 16.

Match each definition to the correct item below.

- | | |
|----------------|---|
| 1. Transverse. | a. A watertight compartment. |
| 2. Deadwood. | b. A longitudinal beam supporting the deck beams. |
| 3. Bulkhead. | c. Forward or aft timbers drift bolted together as packing instead of a grown / sawn chock. |
| 4. Beam shelf. | d. At right angles to the fore and aft line. |

Question 17.

Name the parts below

